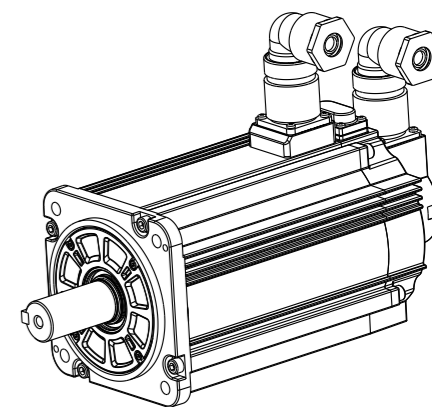
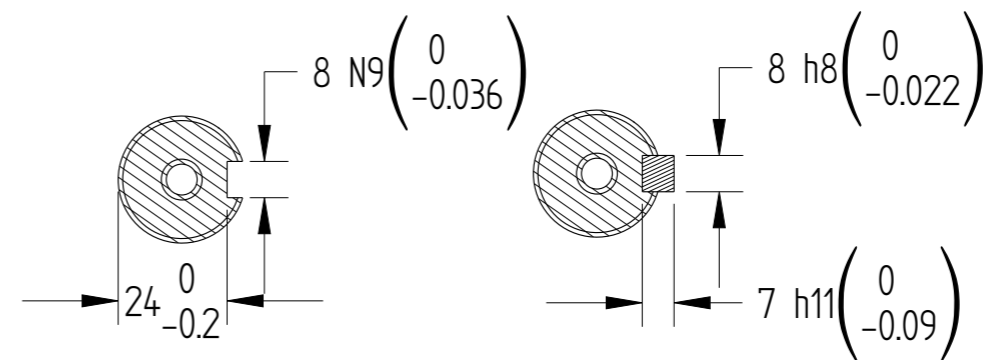
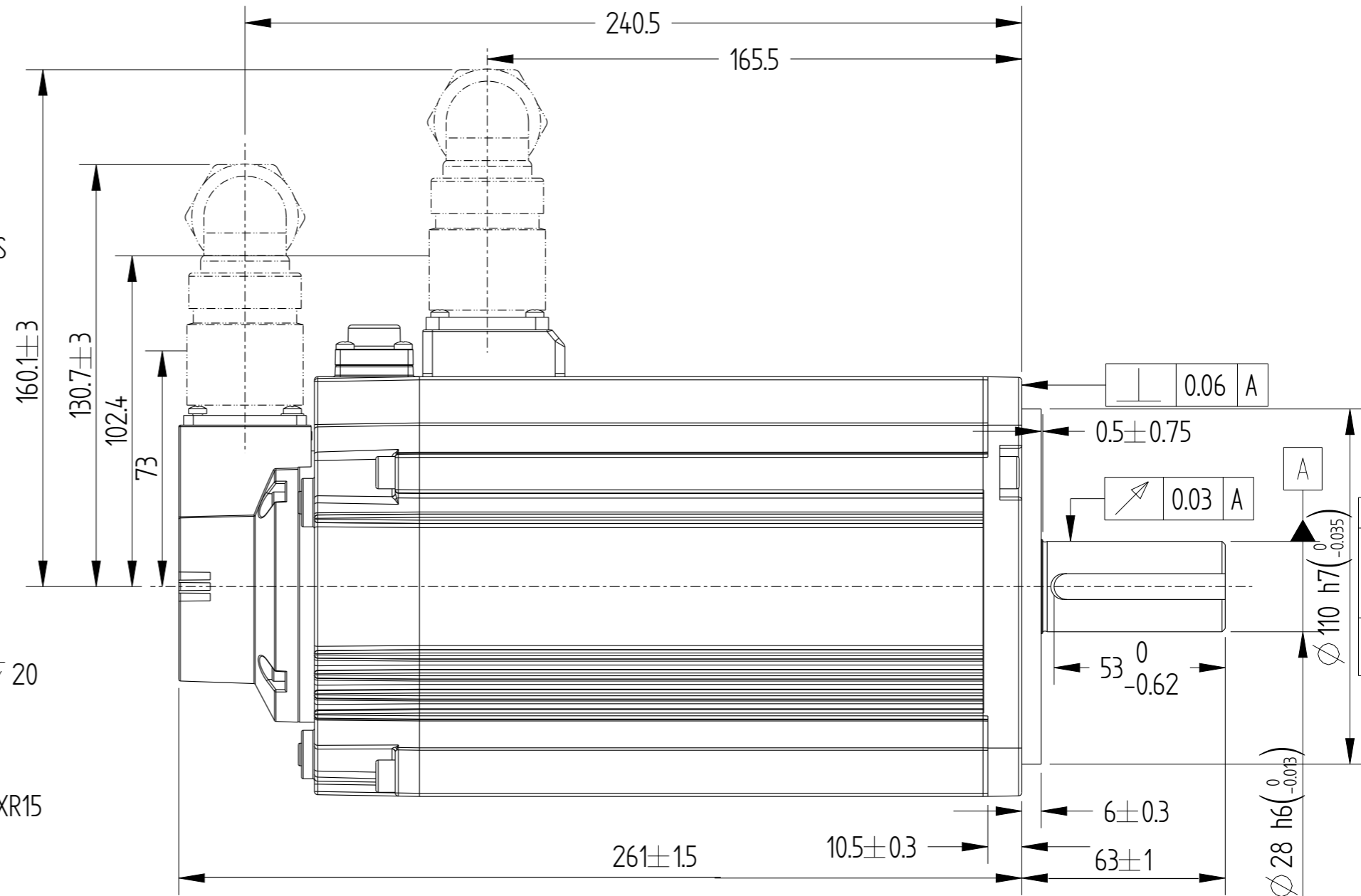
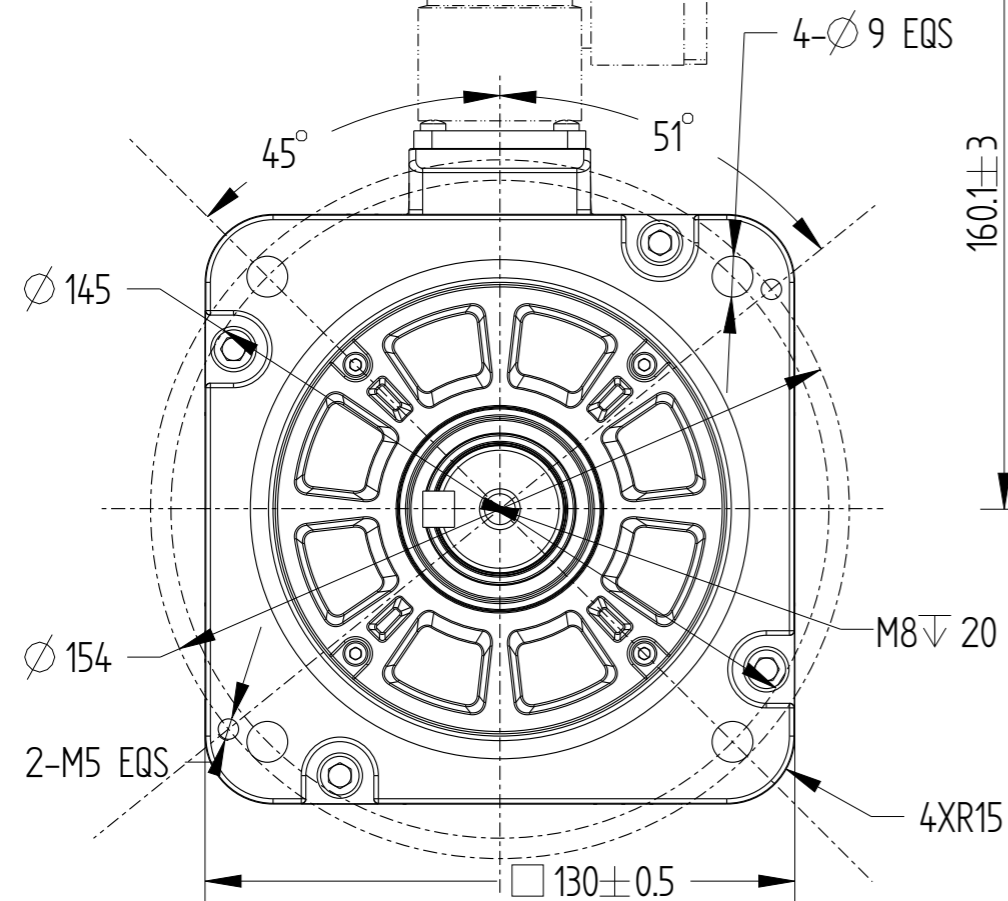
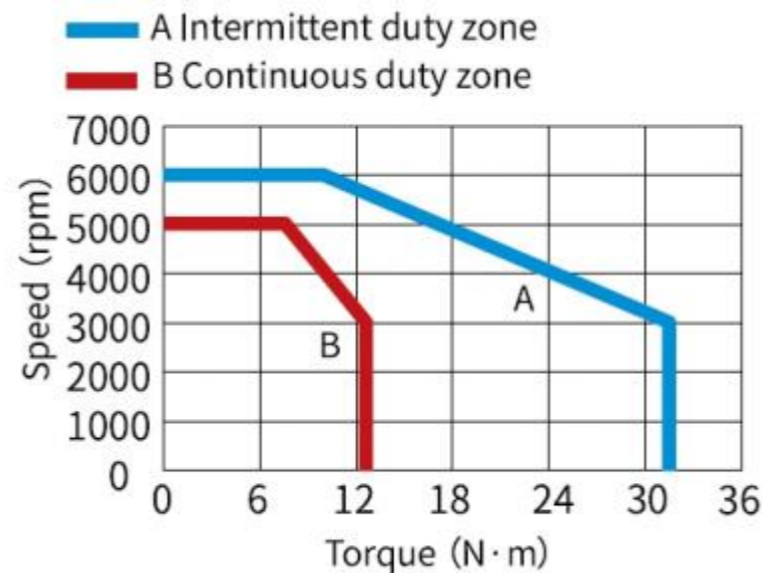

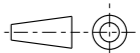


Basic function parameters	
Rated power KW	4
Rated voltage V	220
Rated current A	22
Peak current at rated speed A	67.5
Rated torque Nm	12.6
Peak torque at rated speed Nm	31.5
Rated speed rpm	3000
Max speed rpm	6000
Rotor inertia $\text{kg} \cdot \text{cm}^2$	$11.98 \pm 10\%$
Encoder resolution	23bit
Insulation class	F(155)
Protection level	IP67
Static torque of brake Nm	≥ 16
Brake power supply V	$\text{DC} 24 \pm 10\%$
Brake backlash $^{\circ}$	≤ 1
Duty cycle	S1
Radial load N	≤ 1176
Axial load N	≤ 392



Dimension of shaft end				Dimension of shaft end with key				
B02	Replace	/	/	Motor Outline Drawing			01117934-WX	
B00	New Archive	/	/					
Version	Change method	Changed by	Date					
Design	/			/			Mark	 INOVANCE
Check	/							
Craft	/							
Verify	/			Weight	Scale	Version	Page 1 of 1	
Standardization	/			15.1kg	3:5	B02	Model	MS1H2-40C30CB-A334R-INT
Approve	/							